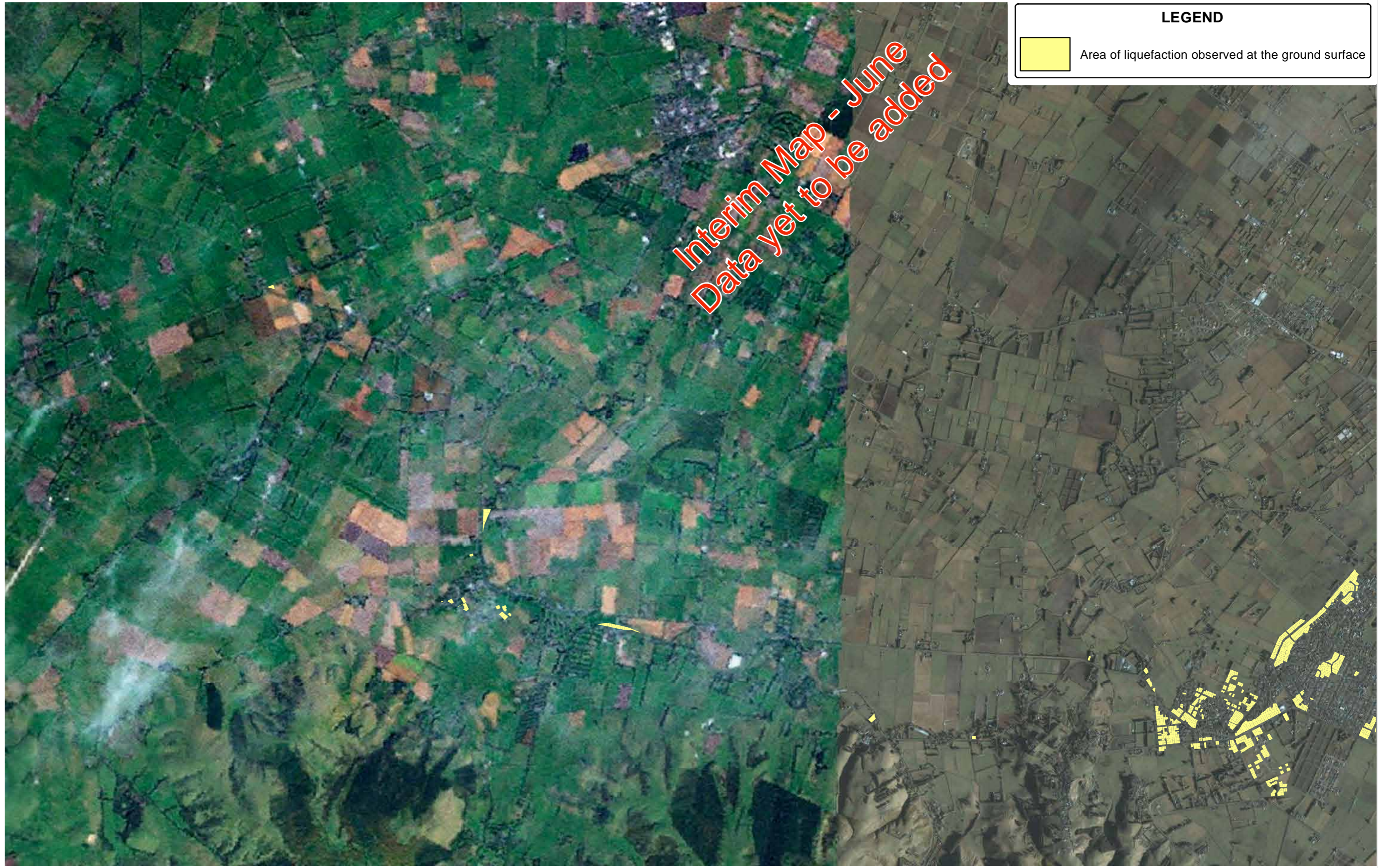


APPENDIX B

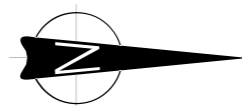
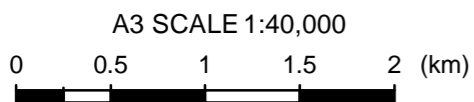
Map series

Map series

Map series 1 - Overview maps			
Map 1.1	General overview map		29
Map 1.2	Overview map - Northern suburbs		30
Map 1.3	Overview map - Central suburbs		31
Map 1.4	Overview map - Eastern suburbs		32
Map 1.5	Overview map - Southern suburbs		33
Map 1.6	Overview map - Port Hills and Lyttelton suburbs		34
Map series 2 - Northern suburbs			
Map 2a	General land observation map	Total area of liquefaction observations to 13 June 2011	35
Map 2b	Detailed land observation map	Recorded observations from 4 September 2010	36
Map 2c	Detailed land observation map	Recorded observations from 22 February 2011	37
Map 2d	Observed ground cracking	Crack locations post 4 September 2010 and 22 February 2011	38
Map 2e	Groundwater elevation contours		39
Map 2f	LiDAR survey	Bare earth digital elevation model pre September 2010	40
Map 2g	LiDAR survey	Bare earth digital elevation model post June 2011	41
Map 2h	Ground surface elevation change	LiDAR difference pre 2010 to post June 2011	42
Map series 3 - Central suburbs			
Map 3a	General land observation map	Total area of liquefaction observations to 13 June 2011	43
Map 3b	Detailed land observation map	Recorded observations from 4 September 2010	44
Map 3c	Detailed land observation map	Recorded observations from 22 February 2011	45
Map 3d	Observed ground cracking	Crack locations post 4 September 2010 and 22 February 2011	46
Map 3e	Groundwater elevation contours		47
Map 3f	LiDAR survey	Bare earth digital elevation model pre September 2010	48
Map 3g	LiDAR survey	Bare earth digital elevation model post June 2011	49
Map 3h	Ground surface elevation change	LiDAR difference pre 2010 to post June 2011	50
Map series 4 - Eastern suburbs			
Map 4a	General land observation map	Total area of liquefaction observations to 13 June 2011	51
Map 4b	Detailed land observation map	Recorded observations from 4 September 2010	52
Map 4c	Detailed land observation map	Recorded observations from 22 February 2011	53
Map 4d	Observed ground cracking	Crack locations post 4 September 2010 and 22 February 2011	54
Map 4e	Groundwater elevation contours		55
Map 4f	LiDAR survey	Bare earth digital elevation model pre September 2010	56
Map 4g	LiDAR survey	Bare earth digital elevation model post June 2011	57
Map 4h	Ground surface elevation change	LiDAR difference pre 2010 to post June 2011	58
Map series 5 - Southern suburbs			
Map 5a	General land observation map	Total area of liquefaction observations to 13 June 2011	59
Map 5b	Detailed land observation map	Recorded observations from 4 September 2010	60
Map 5e	Groundwater elevation contours		61
Map series 6 - Port Hills and Lyttelton suburbs			
Map 6a	General land observation map	Aggregated land observations to 13 June 2011	62
Map 6b	Detailed land observation map	Land observations after 13 June 2011	63
Map 6b-1	Detailed land observation map	Land observations after 13 June 2011	64
Map 6b-2	Detailed land observation map	Land observations after 13 June 2011	65
Map 6b-3	Detailed land observation map	Land observations after 13 June 2011	66
Map 6b-4	Detailed land observation map	Land observations after 13 June 2011	67



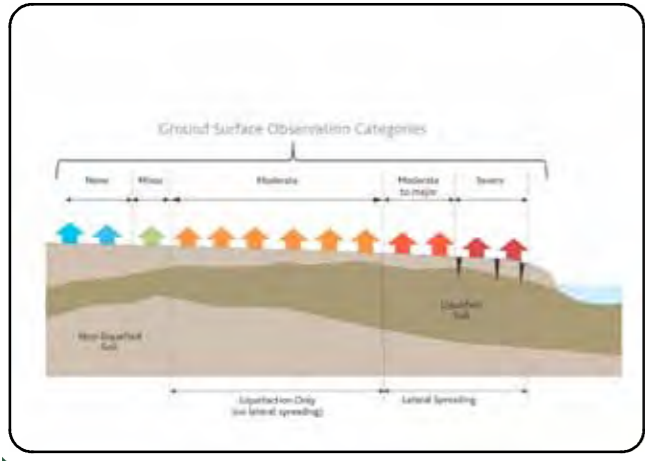
Notes: Road Database supplied by Terralink International Ltd. Rivers, lakes, lagoons, coastline and roads licensed under Creative Commons Attribution 3.0 New Zealand and sourced from LINZ Aerial Photography from ArcGIS Online



DRAWN	HKB	Jun.12
CHECKED		
APPROVED		
ARCFILE	A3L_LiquefactionMaps_31052012	
SCALE (AT A3 SIZE)	1:40,000	
Prepared By	Tonkin & Taylor Ltd.	
Ref.	52000.400	

MAP SERIES 5
GENERAL LAND OBSERVATION MAP
Total Area of Liquefaction Observations from Events
Between 4 September 2010 to end 13 June 2011

FIGURE No.	Map 5a Southern Suburbs	Rev.	0
------------	-------------------------	------	---



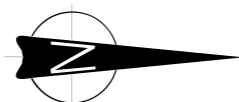
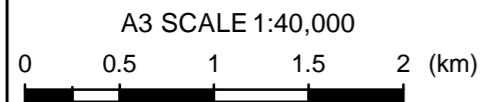
Legend

Land Observations Post 4 September 2010

- No observed ground cracking or ejected liquefied material
- Minor ground cracking but no observed ejected liquefied material
- No lateral spreading but minor to moderate quantities of ejected material
- Moderate to major lateral spreading or large quantities of ejected material
- Severe lateral spreading; ejected material often observed



Notes: Road Database supplied by Terralink International Ltd. Rivers, lakes, lagoons, coastline and roads licensed under Creative Commons Attribution 3.0 New Zealand and sourced from LINZ. Aerial Photography from ArcGIS Online



DRAWN	HKB	Jun.12
CHECKED		
APPROVED		
ARCFILE		
3L_LiquefactionSept_08062012.mxd		
SCALE (AT A3 SIZE)	1:40,000	
Prepared By	Tonkin & Taylor Ltd.	
Ref.	52000.400	

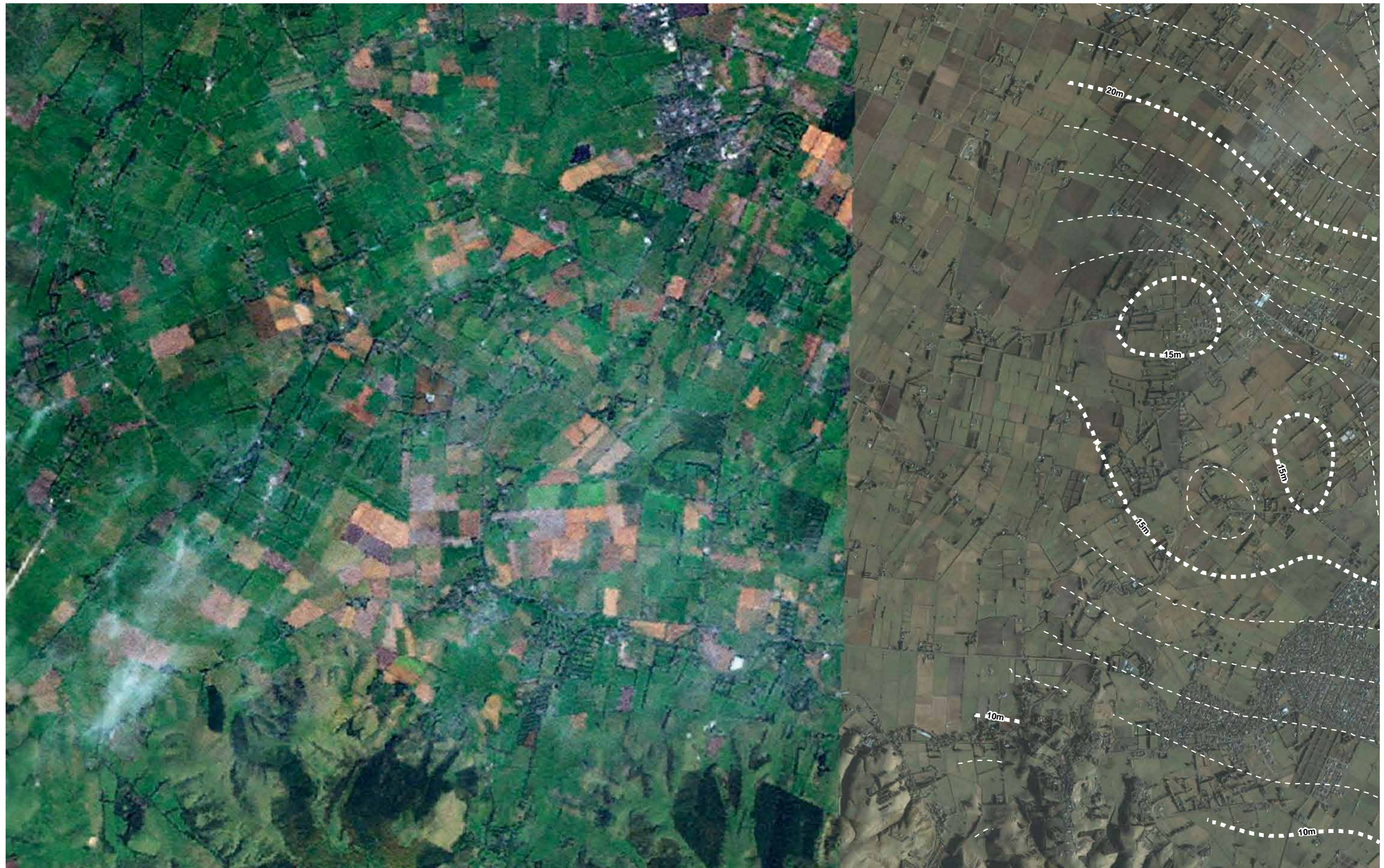
MAP SERIES 5

DETAILED LAND OBSERVATION MAP

Recorded Liquefaction and Lateral Spreading Observations from 4 September 2010

FIGURE No. Map 5b Southern Suburbs

Rev. 0



Notes: Aerial photography from ArcGIS Online
Vertical Datum: Lyttelton 1937

Groundwater Contours are indicative only and are derived from data of varying sources (including ECAN and EQC piezometers).
NB Levels of accuracy vary across the dataset.



DRAWN	HKB	Jun.12
CHECKED		
APPROVED		
ARCFILE A3L_GroundwaterMaps_31052012		
SCALE (AT A3 SIZE) 1:40,000		
Prepared By Tonkin & Taylor Ltd. Ref. 52000.400		

MAP SERIES 5
GROUNDWATER ELEVATION CONTOURS

FIGURE No. **Map 5e Southern Suburbs**

Rev. **0**

